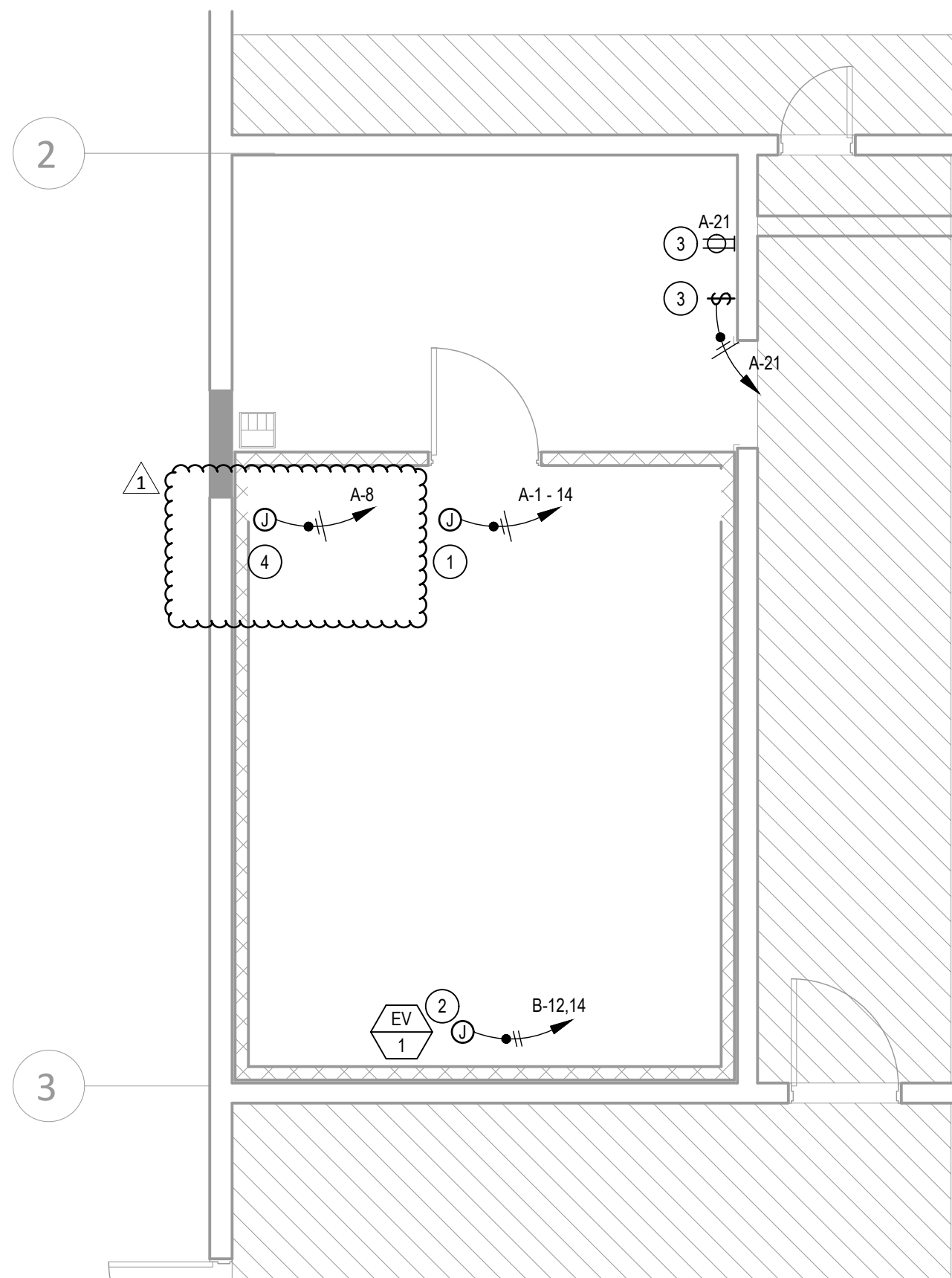


1 DEMOLITION FLOOR PLAN
1/4" = 1'-0"



2 PROPOSED FLOOR PLAN
1/4" = 1'-0"



DEMOLITION GENERAL NOTES

1. REFER TO SHEET E0.2 FOR GENERAL NOTES.

DEMOLITION KEYNOTES

- 1 CONTRACTOR SHALL TRACE AND IDENTIFY EXISTING BRANCH CIRCUIT SERVING EXISTING TOGGLE SWITCH. DISCONNECT AND REMOVE EXISTING TOGGLE SWITCH. REMOVE WIRING BACK TO SOURCE PANEL, UNLESS NOTED OTHERWISE. LABEL ANY EXISTING VACATED CIRCUIT BREAKERS AS SPARE AND UPDATE OWNER'S AS-BUILT RECORD DRAWINGS. REMOVE EXPOSED, SURFACE MOUNTED CONDUIT. CONDUIT IN WALLS, BELOW SLAB OR ABOVE CEILINGS SHALL BE CAPPED AND ABANDONED IN PLACE.
- 2 CONTRACTOR SHALL TRACE AND IDENTIFY EXISTING BRANCH CIRCUIT SERVING EXISTING RECEPTACLE. DISCONNECT AND REMOVE EXISTING BRANCH CIRCUIT SERVING RECEPTACLE. PRESERVE CONTINUITY TO ANY OTHER DEVICES ON THIS BRANCH CIRCUIT. DISCONNECT AND REMOVE EXISTING RECEPTACLE TO BE SALVAGED AND REINSTALLED. CONDUIT IN WALLS, BELOW SLAB OR ABOVE CEILINGS SHALL BE CAPPED AND ABANDONED IN PLACE.
- 3 CONTRACTOR SHALL TRACE AND IDENTIFY EXISTING BRANCH CIRCUIT SERVING EXISTING TOGGLE SWITCH. DISCONNECT AND REMOVE EXISTING TOGGLE SWITCH. PRESERVE CONTINUITY TO ANY OTHER DEVICES ON THIS BRANCH CIRCUIT. DISCONNECT AND REMOVE EXISTING TOGGLE SWITCH TO BE SALVAGED AND REINSTALLED. CONDUIT IN WALLS, BELOW SLAB OR ABOVE CEILINGS SHALL BE CAPPED AND ABANDONED IN PLACE.
- 4 CONTRACTOR SHALL TRACE AND IDENTIFY EXISTING BRANCH CIRCUIT SERVING EXISTING CAPPED RECEPTACLE. DISCONNECT AND REMOVE EXISTING CAPPED RECEPTACLE. REMOVE WIRING BACK TO SOURCE PANEL, UNLESS NOTED OTHERWISE. LABEL ANY EXISTING VACATED CIRCUIT BREAKERS AS SPARE AND UPDATE OWNERS AS-BUILT RECORD DRAWINGS. REMOVE EXPOSED, SURFACE MOUNTED CONDUIT. CONDUIT IN WALLS, BELOW SLAB OR ABOVE CEILINGS SHALL BE CAPPED AND ABANDONED IN PLACE.

GENERAL NOTES

1. REFER TO SHEET E0.2 FOR GENERAL NOTES.

KEYNOTES

- 1 PROVIDE AND INSTALL JUNCTION BOX FOR POWER CONNECTION TO AUXILIARY POWER FOR NEW FREEZER. COORDINATE UNIT FEED LOCATION WITH MANUFACTURER SHOP DRAWINGS.
- 2 PROVIDE AND INSTALL JUNCTION BOX FOR POWER CONNECTION TO EVAPORATOR FOR NEW FREEZER. COORDINATE UNIT FEED LOCATION WITH MANUFACTURER SHOP DRAWINGS.
- 3 INTERCEPT AND EXTEND EXISTING CONDUITS AND CONDUCTORS AS NEEDED FOR POWER CONNECTION TO SALVAGED ELECTRICAL DEVICE TO BE RELOCATED AND REINSTALLED. CONTRACTOR SHALL FIELD VERIFY EXISTING CONDITIONS PRIOR TO ROUGH-IN.
- 4 PROVIDE AND INSTALL JUNCTION BOX FOR POWER CONNECTION TO HEAT TAPE FOR NEW FREEZER. COORDINATE UNIT FEED LOCATION WITH MANUFACTURER SHOP DRAWINGS.

ENLARGED PLANS

SAN DIEGO UNIFIED SCHOOL DISTRICT
KITCHEN MODIFICATIONS GROUP 6
CLAIREMONT HIGH SCHOOL
4150 LITE DR., SAN DIEGO, CA 92117
DSA SUBMITTAL SET

PREPARED FOR THE
BOARD OF EDUCATION

PREPARED BY THE
obr/ARCHITECTURE
2419 EL CAJON BLVD., SAN DIEGO, CA 92104



FOR DSA REVIEW ONLY -
NOT FOR CONSTRUCTION

